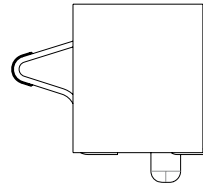
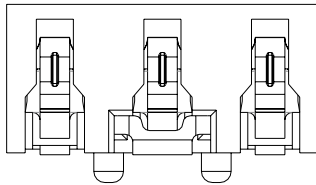
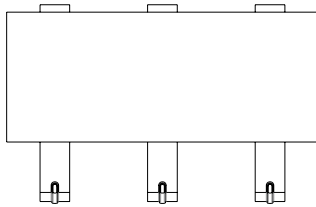


# Battery Socket



## SPECIFICATIONS

1. CURRENT RATING:  
2.5A 12V DC
2. CONTACT RESISTANCE:  
60mΩ MAX AT DC 20mA.
3. INSULATION RESISTANCE:  
500MΩ MIN AT 500V DC.
4. DIELECTRIC WITHSTANDING  
VOITAGE: 500V AC FOR 1MINUTE.
5. OPERATING TEMPERATURE  
RANGE: -30°C TO +85°C.



**L 2 9 0 1 - 0 3 M 1 P X - 0 1 X - A**

**Insulator material**  
N: Nylon-6T  
B: PBT  
L: LCP  
D: NY66

**Number of Contact**

**Color**

**Appearance of pin header**  
S10: Straight  
D10: Right angle  
M1P:SMT

**Plating material**  
G Gold Plated  
T Tin Plated  
H Duplex Plated

**Plating thickness**  
01 Normal  
08 8u"  
15 15u"