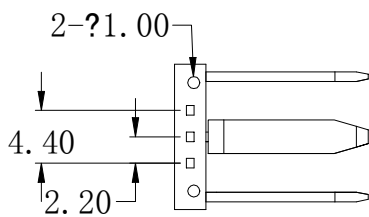
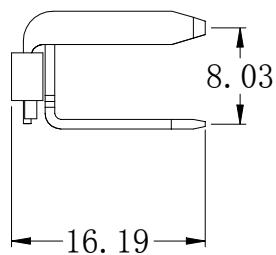
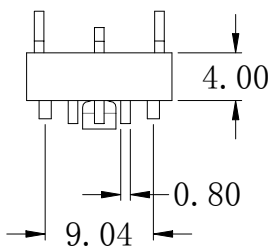
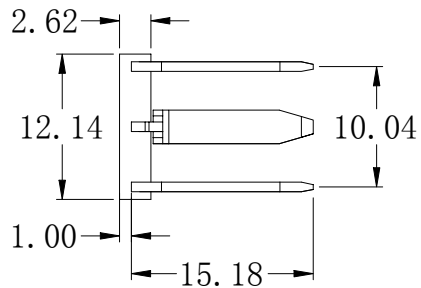
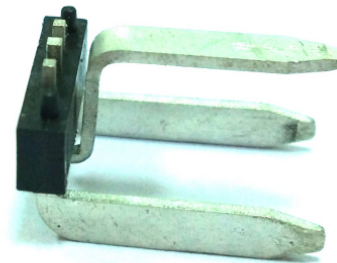


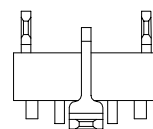
2.0 Series

Right Angle



SPECIFICATIONS

Insulator Material:
 PBT UL94V-0-140C GF 30%
 Color:Black
 Contact Material:
 Brass C2600 H
 Finish:
 Tin plated



B 1 4 0 B 0 - X X D 1 P X - 0 1 X

Insulator material
 N: Nylon-6T
 B: PBT
 L: LCP
 D: NY66

Row of pin
 1: single row
 2: dual row

Number of Contact

Appearance of pin header
 S10: Straight
 D10: Right angle
 M10: SMT

Color

Plating material
 G Gold Plated
 T Tin Plated
 H Duplex Plated

Plating thickness
 01 Normal
 10 10u"
 15 15u"