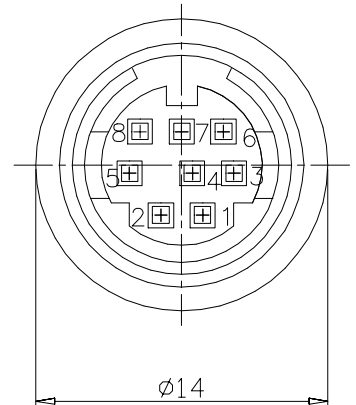
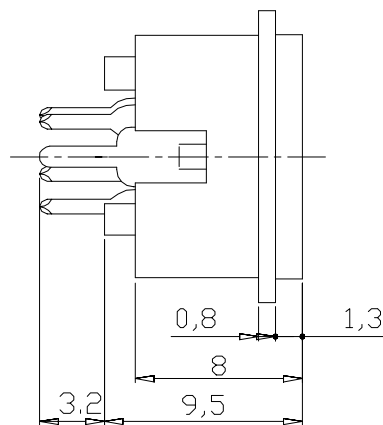
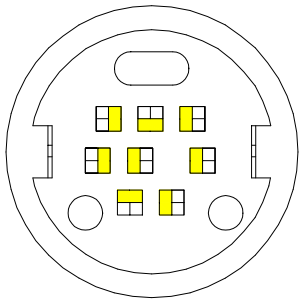


# Mini Din Socket

## SPECIFICATIONS

Insulator resistance:  
 100 Megohms Min.  
 Dielectric withstanding:  
 AC 250 V  
 Operating Temperature:  
 -25°C - +70°C  
 Contact Material:  
 Brass/Phosphor bronze  
 Insulator Material:  
 Standard: P.B.T  
 Color: Black  
 Finish:  
 Tin plated



**S** **1** **0** **1** **0** **D** - **X** **X** **S** **1** **0** **B** - **0** **1** **T**

Number of Contact

Appearance of pin header  
S10: Straight

Color

Plating material  
G Gold Plated  
T Tin Plated  
H Duplex Plated

Plating thickness  
01 Normal  
08 8u"  
15 15u"